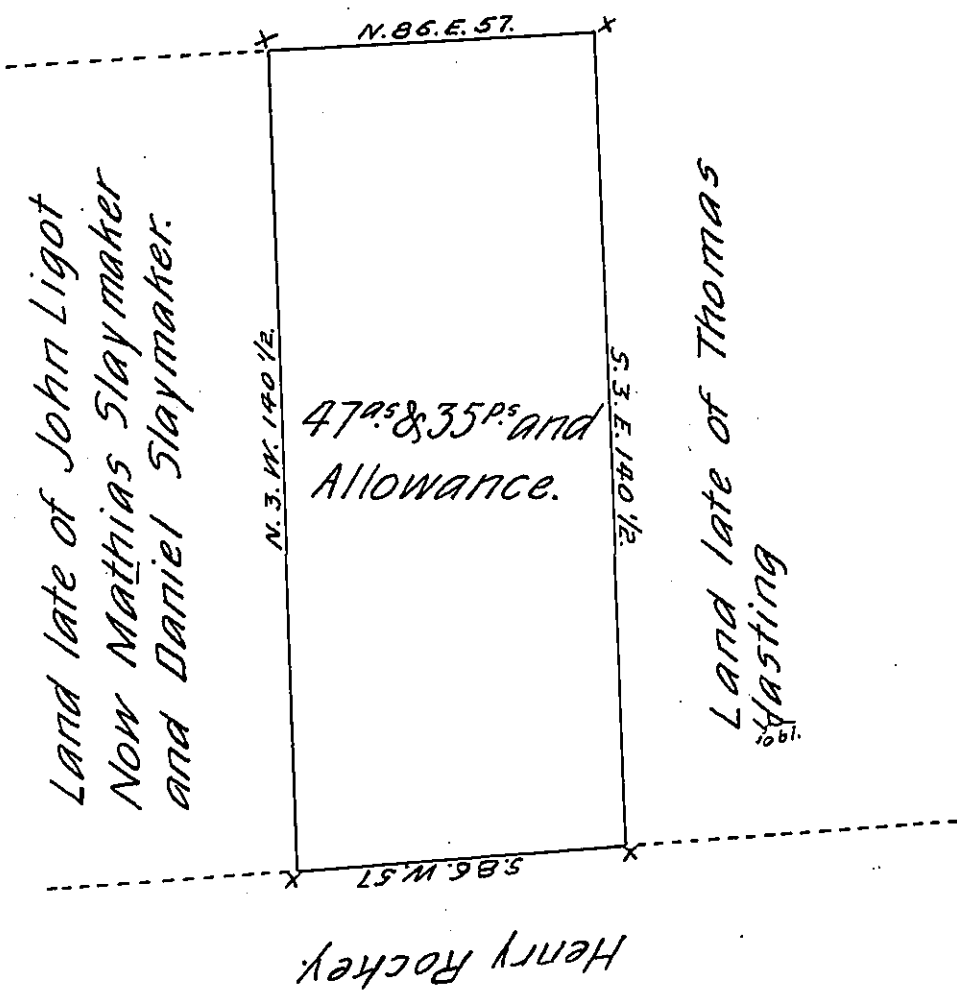


Daniel Slaymaker.



A Draught of a Tract of Land Situate in Strasburg Township, Lancaster County. Containing 47^{ac} & 35^p and the Usual Allowance of Six p^r Cent. for Roads &c^e. Surveyed the 10th Day of July A. D. 1801 for Thomas Green By Virtue of a Warrant Dated the Eight-Day of March A. D. 1747.

p^r. H. Ream D. Sr.

To Samuel Cochran, Esq^r.
Surveyor General.

& Sam^l Ensminger
D. Sr.

IN TESTIMONY that the above is a copy of the original remaining on file in the Department of Internal Affairs of Pennsylvania, made conformably to an Act of Assembly approved the 16th day of February, 1833, I have hereunto set my Hand and caused the Seal of said Department to be affixed at Harrisburg, this fourteenth day of February 1905.

James D. [Signature]
Secretary of Internal Affairs.